



Rev: 020722

Agromatic INC

RELAX

Flexible Freestall Installation Guide



(800) 800-5824 • agromatic.net

RELAX: Important Information

- Tools:***
- 3/4" socket
 - 9/16" socket
 - Tape measure
 - Chalk line
 - Drill
-

Important:

The stated measurements in the installation manual are just instructive.

Measuring and installation can vary for each facility. Local requirements/laws for buildings codes must be respected.

We do not recommend the Agromatic RELAX system be installed outdoors.

Please contact Agromatic Inc with questions:

Phone: (800) 800-5824

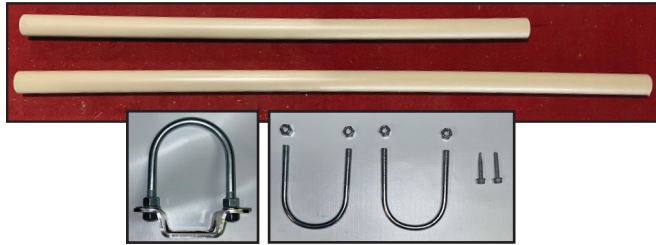
E-mail: info@agromatic.net

Website: agromatic.net

RELAX: Ordering Guide

1. Order Divider Pipe Kit - SF3020

- Includes:
- 1 - 87" lower pipe
 - 1 - 69" upper pipe
 - 1 - Floating control rail clamp
 - 2 - U-bolts for neck rail
 - 4 - Lock nuts
 - 2 - Self-tapping screws



2. Order RELAX Neck Rail Tube (19') - SF3120

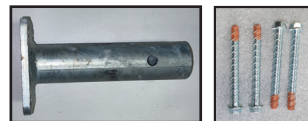
3. Order RELAX Neck Rail Connector Kit - SF3102

- Includes:
- 1 - 15" connector
 - 4 - Self-tapping screws



4. Order RELAX Straight Mount (for ends) - S5A-W209-6

*Anchors NOT included, must be ordered separately



Recommended Anchors:
4 qty. - MK0065
3/8" x 4" LDT's

5. Pick Your Divider Mounting Kits:

If Mounting To Existing Posts order 1 of each for each divider pipe kit



S5A-W209-80FH -
2.5" angled RELAX mount



S5A-W209-6 -
2.5" straight RELAX mount

***Bolts, nuts and fasteners are custom ordered**

57" Cement-in Posts



Single Row - SF3211

- 1 - 68" cement-in RELAX post (11" cemented in, 57" above)
- 1 - Post cap
- 1 - 2.5" angled RELAX mount
- 1 - 2.5" straight RELAX mount
- 4 - Square u-bolts, 1/2-13 ZP (2.5" sq.)
- 8 - Hex Nuts, Top Lock 1/2-13 ZP

Head-to-Head - SF3221

- 1 - 68" cement-in RELAX post (11" cemented in, 57" above)
- 1 - Post cap
- 2 - 2.5" angled RELAX mount
- 2 - 2.5" straight RELAX mount
- 4 - Square u-bolts, 1/2-13 ZP (2.5" sq.)
- 8 - Hex Nuts, Top Lock 1/2-13 ZP



57" Bolt-down Posts

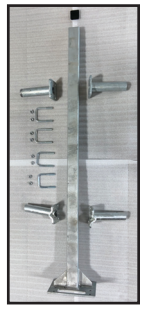


Single Row - SF3311

- 1 - 57" bolt-down RELAX post w/ 8" x 10" pad
- 1 - Post cap
- 1 - 2.5" angled RELAX mount
- 1 - 2.5" straight RELAX mount
- 4 - Square u-bolts, 1/2-13 ZP (2.5" sq.)
- 8 - Hex Nuts, Top Lock 1/2-13 ZP

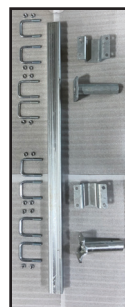
Head-to-Head - SF3321

- 1 - 57" bolt-down RELAX post w/ 8" x 10" pad
- 1 - Post cap
- 2 - 2.5" angled RELAX mount
- 2 - 2.5" straight RELAX mount
- 4 - Square u-bolts, 1/2-13 ZP (2.5" sq.)
- 8 - Hex Nuts, Top Lock 1/2-13 ZP



*Recommended anchors: X21916 - Concrete LDT anchor, 1/2" x 4" ZP

Twin Beam System

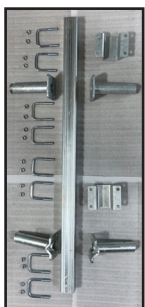


Single Row - SF3410

- 1 - 48" galvanized post
- 1 - 2.5" straight RELAX mount
- 1 - 2.5" angled RELAX mount
- 2 - 2.5" sq. post clamp channel
- 8 - Square u-bolts, 1/2-13 ZP (2.5" sq.)
- 16 - Hex Nuts, Top Lock 1/2-13 ZP

Head-to-Head - SF3420

- 1 - 48" galvanized post
- 2 - 2.5" straight RELAX mount
- 2 - 2.5" angled RELAX mount
- 2 - 2.5" sq. post clamp channel
- 8 - Square u-bolts, 1/2-13 ZP (2.5" sq.)
- 16 - Hex Nuts, Top Lock 1/2-13 ZP

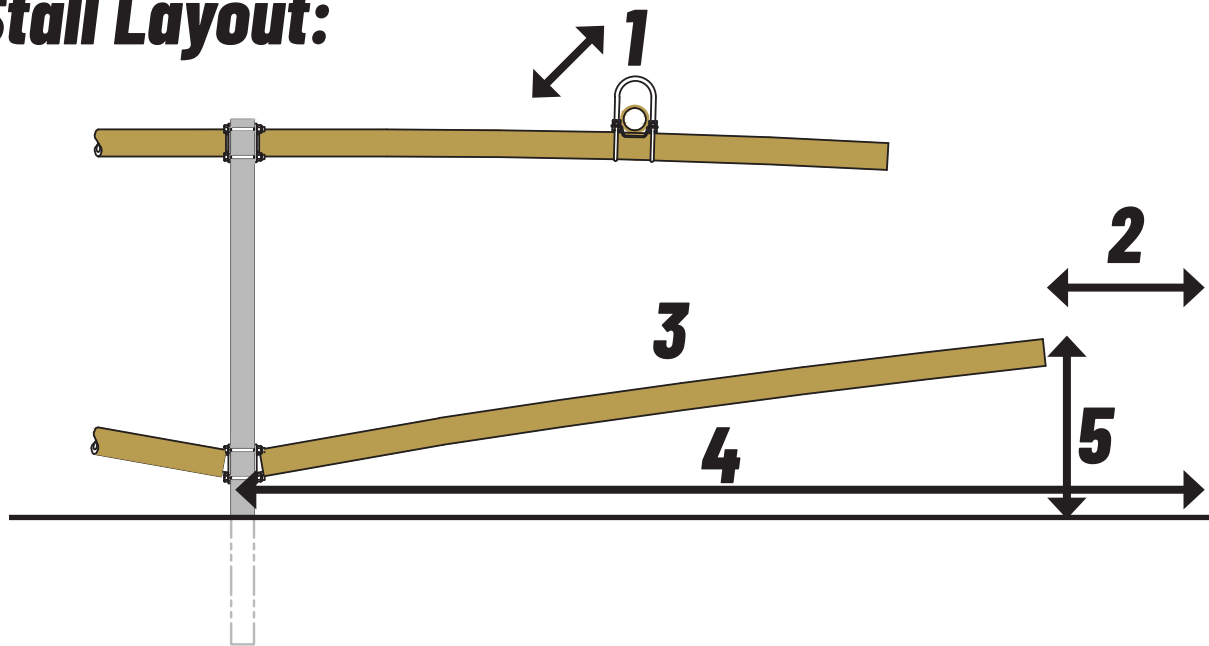


SF1403-FP (6.5" bolts)
or **SF1404-FP (7.5" bolts)** -
16.5" OC Beam Support Kits

S86046 - 2.5" Beam Rail
&
S14245 - 6" Beam Splice

RELAX: Installation Guide

1. Stall Layout:



1.1 Recommended width of the stall: 40" - 48" (depending on size of cow)

1.2 Distance from end of bottom pipe to back of stall: 6" - 12"

1.3 Bottom Pipe Length: 87"

1.4 Distance from front of post to back of stall: 98-1/2"

1.5 Height from top stall surface to center of bottom pipe: 25-1/2"

1.6 Reference *Figure 1* for recommended measurements based on animal size

2. Installation of Posts:

2.1 Position posts vertically

2.2A - Cement-in posts should be 57" above grade

For head-to-head, center posts in between stalls

For outside row, measure 7' 6" from curb to inside of post

2.2B - Bolt-down posts - use same parameters as cement-in

RELAX: Installation Guide

3. Installing Bottom Stall Divider

3.1 Materials:

- 1 x angled RELAX mount**
- 2 x u-bolt**
- 4 x lock nuts**
- 1 x 86" lower pipe**
- 1 x self-tapping screw**

3.2 Stall Divider

When lower pipe is installed, screw is set into hole on the mount

3.3 See Tubing Tolerance Guide on page 7 for proper tube installation

4. Installing Top Stall Divider

4.1 Materials:

- 1 x straight RELAX mount**
- 2 x u-bolt**
- 4 x lock nuts**
- 1 x 69" upper pipe**
- 1 x self-tapping screw**

4.2 Stall Divider

Reference Figure 1 for recommended height

When upper pipe is installed, screw is set into hole on the mount

4.3 See Tubing Tolerance Guide on page 7 for proper tube installation

5. End Wall

5.1 Use 2.5" straight RELAX mount to mount neck rail to end wall

RELAX: Installation Guide

6. Installing Floating Control Rail

6.1 Materials:

1 x floating control rail clamp

1 qty. - formed retainer

2 qty. - u-bolt, 3/8-16 ZP

4 qty. - nylock nut, 3/8-16 ZP

1 qty. - u-bolt, 1/2-13 ZP

2 qty. - hex nut, 1/2-13 ZP

2 qty. - toploc nut, 1/2-13 ZP

2 qty. - lock washer, 1/2 ZP

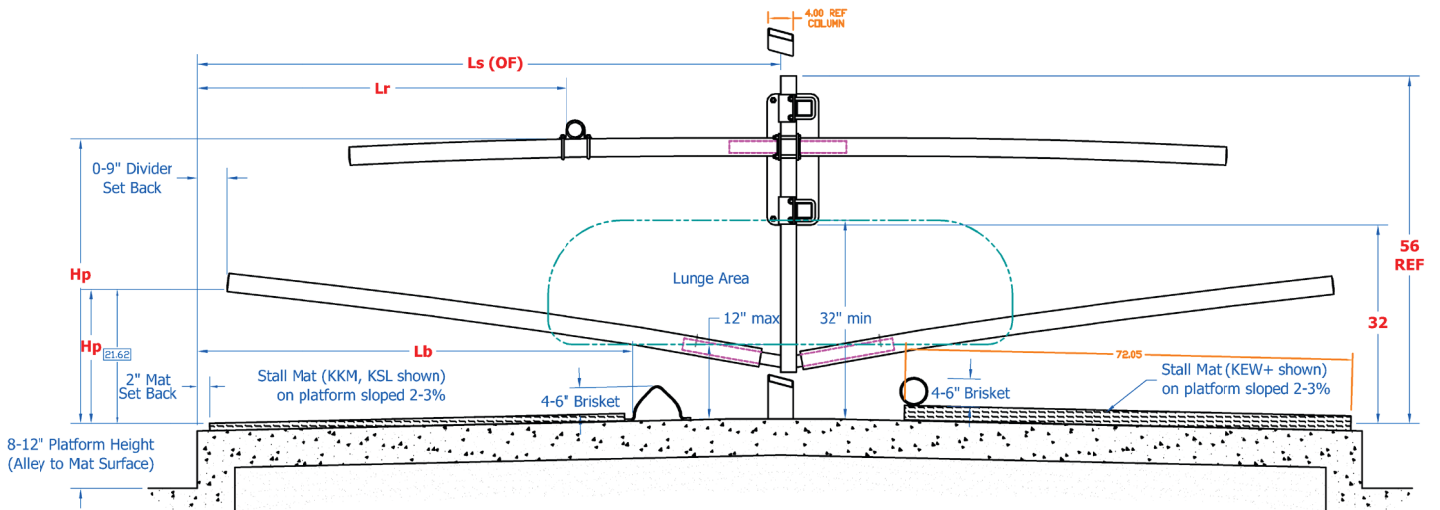
19' Flex Rail Neck Tube (+ 15" RELAX Neck Rail Connector to attached sections)



6.2 Neck Rail Placement

Reference Figure 1 for recommended neck rail placement

RELAX: Figure 1



Recommended Freestall Dimensions for Dairy Animals

Animal Size	W	Ls (OF)	Ls (CF)	Lr & Lb	Hp
* 300 - 500 lbs.	32-34"	46-56"	54-64"	38-42"	28-32"
* 500 - 750 lbs.	34-38"	58-68"	68-78"	44-52"	32-36"
* 750 - 1000 lbs.	38-42"	68-76"	78-86"	54-60"	36-40"
1000 - 1200 lbs.	42-45"	76-84"	88-96"	60-64"	40-44"
1200 - 1400 lbs.	46-48"	84-90"	96-102"	64-68"	44-46"
1400 - 1500 lbs.	48-50"	90-96"	102-108"	68-70"	46-48"
1500-1600+ lbs.	50-52"	94-100"	106-112"	69-72"	46-50"

- W** Width of stall cubicle (O.C.)
- Ls (OF)** Platform length, Open Front Stall (curb to center of partition support)
- Ls (CF)** Platform length, Closed Front Stall (curb to w all/partition support)
- Lr** Control rail location (length from curb to center of control rail)
- Lb** Brisket rest location (length from curb to brisket rest surface)
- Hp** Partition height (top of partition from top of mat/platform surface)

Platform surface (concrete) should slope 2-3% towards alley (2-3" in 100")

Allow lunge clearance to front and side of brisket rest

In most cases, a larger stall cubicle affords the best cow comfort

*Reference dimensions given on cubicle drawings for 1000+ lbs. animals only.